

SDZ GREEN INFRASTRUCTURE NETWORK

Section 2.3.2 of the Planning Scheme Framework Clonburris underlines that:

'... green spaces will take the form of parks, open spaces, constructed wetlands, swales, tree planting, hedgerows, parks, permeable paving, green roofs and a green bridge over the railway line. These spaces will provide for amenity and recreation, biodiversity protection and enhancement, water management and adaption to climate change. In general, the recreation and amenity spaces should all be overlooked by buildings and streets that would provide passive supervision from residents, pedestrians and passing motorists where appropriate.'



SDZ Green infrastructure

SUDS TREATMENT ELEMENTS

As part of the design of the public open spaces, we have worked closely with the projects and have taken account of the Kishoge SDZ and South Dublin County Council Development Plan. As part of this we have proposed where possible surface level SUDS treatment with the use of:

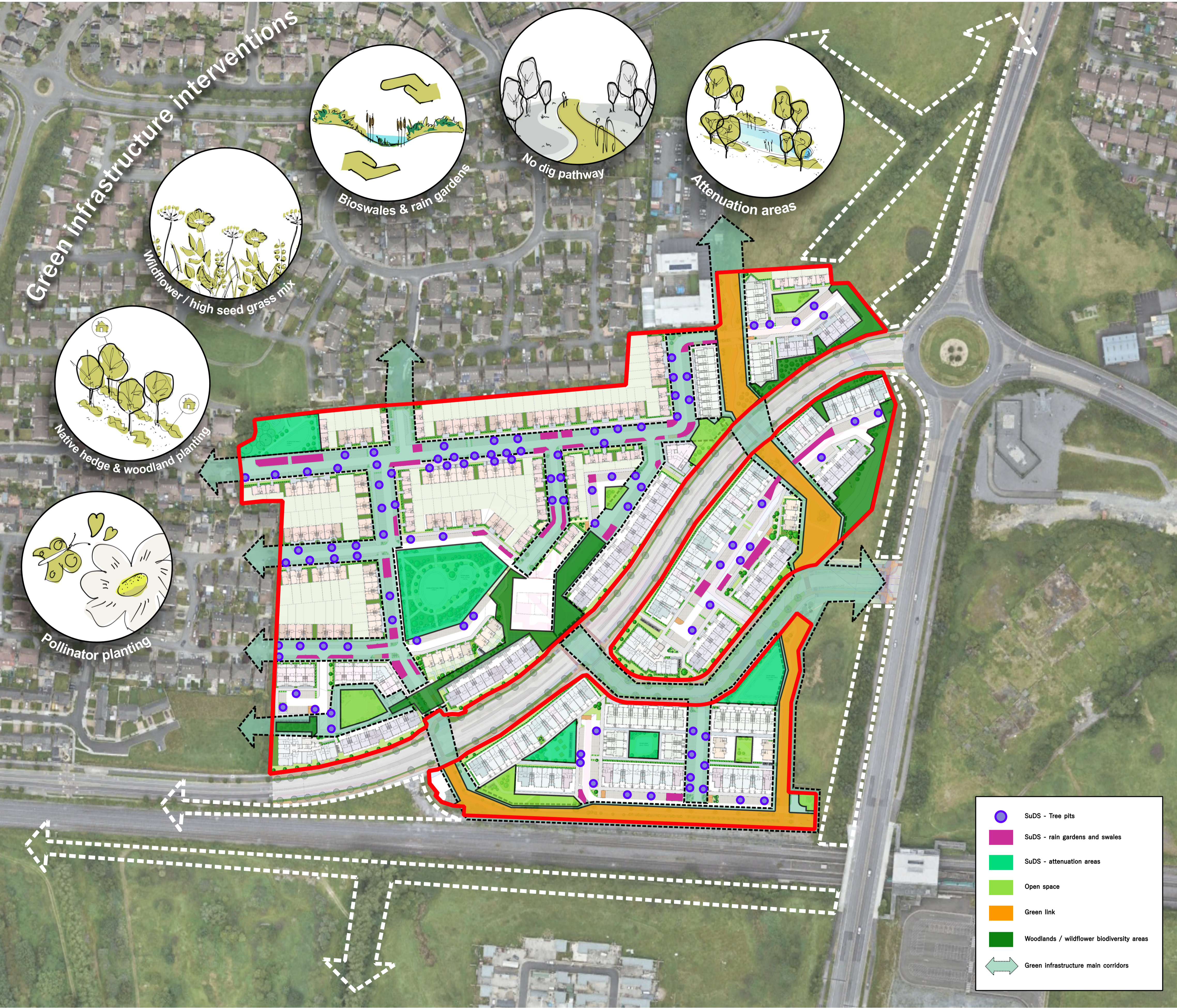
- Attenuation Basins
- Swales
- Bio retention Tree pits
- Rain Gardens

The primary SUDS proposals are the attenuation basins, these have been positioned and fashioned in the public open space to provide areas of active amenity as sunken lawns which can accommodate small scale ball games.

These sunken lawns have the potential to become 'Arenas' for children to play games. With the sloped sides acting as 'stands' for friends, teammates and parents to look on as the games with 'jumpers for goal posts' allow children to copy the heroics of their favourite teams and players. The sloped sides also help contain the ball in the 'Arena'.



Example of SuDS and attenuation areas



Rev.	Date	Note
00.	00.00.0000	TBC



General Notes

Doyle & O'Troithigh  
Landscape  
Architecture

Project Name	Kishoge Part 10 Application	Drawing Name	Site 3 Green Infrastructure Plan
Status	Planning	Drawing No.	GI-02-PP
Project No.	23-021	Revision No.	00
Scale	NTS	Drawn By	J.A.
Date	20/02/2025	Checked By	D&O'T
Linda Doyle Director	+353 (0)87 267 4196 linda@doyle-otroithigh.com	Dailh O'Troithigh Director	+353 (0)86 300 3499 dailh@doyle-otroithigh.com
Office Address	Pembroke House 28-29 Upper Pembroke St Dublin 2	Contact	mail@doyle-otroithigh.com +353 (0)1 608 7752